

## OUR TEAM

John Workman, Ph.D.

CEO

DrWorkman@aiftherapy.com

Vivian Workman

Director of Administration

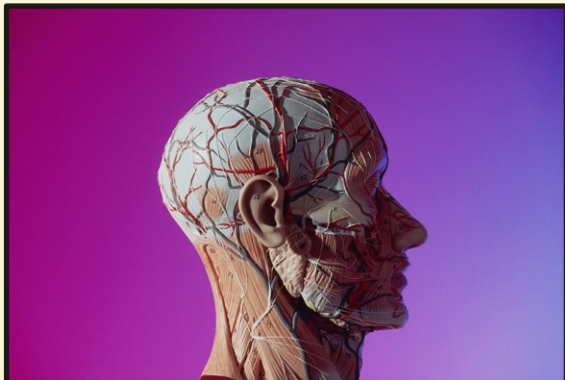
VivianWorkman@aiftherapy.com

# Accident Injury & Family Therapy, Inc.

P.O. Box 6646  
Orange, CA 92863

[www.aiftherapy.com](http://www.aiftherapy.com)

**Tel: 800.399.9773**  
**Fax: 714.639.0072**



Accident Injury  
& Family  
Therapy, Inc.

*Providing the healthcare  
community with the  
gold standard in  
psychological and pain  
evaluation.*

## PURPOSE

I have brought together some of California's finest psychologists to produce outstanding psychological and pain evaluations so that doctors can provide a comprehensive level of care for their patients and gain a valuable marketing tool by expanding communications with the legal and healthcare communities.

- *John Workman, Ph.D.*

## BENEFITS

- No Cost to the Doctor
- No Cost to the Patient
- We Come to You
- ACOEM Compliant
- Fast & Reliable Report Production

## OUR COMPANY

Our company provides on-site California licensed psychologists who evaluate your workers compensation patients and define psychological and pain indexes. These quality evaluations document the patient's emotional components of injury as they assess for the existence of psychological conditions and establish disability ratings that improve legal and healthcare co-management and administration.



## WHY PSYCHOLOGICAL EVALUATIONS?

As per ACOEM guidelines, "In patients with chronic pain, psychological reactions to the pain become the major contributors to impaired functioning. These include anxiety, helplessness, escape/avoidance behaviors, depression, and increased pain behavior...The physician should view the psychological mechanisms of pain as just as real as the physical dimensions..." (pp.108, 115) The purpose of a psychological evaluation is to assess these psychological components that have resulted from your patient's injury and pain condition, thus providing the doctor with a more accurate disability rating that incorporates psychological disability. In a quality report, we further rule out the potential for psychological malingering and show whether or not there is a direct relationship between the patient's physical limitations/somatic pain and their mental condition, so that the patient may be found to be unable to heal from the mental/emotional effects of their injury unless a significant improvement of their physical condition is made.

